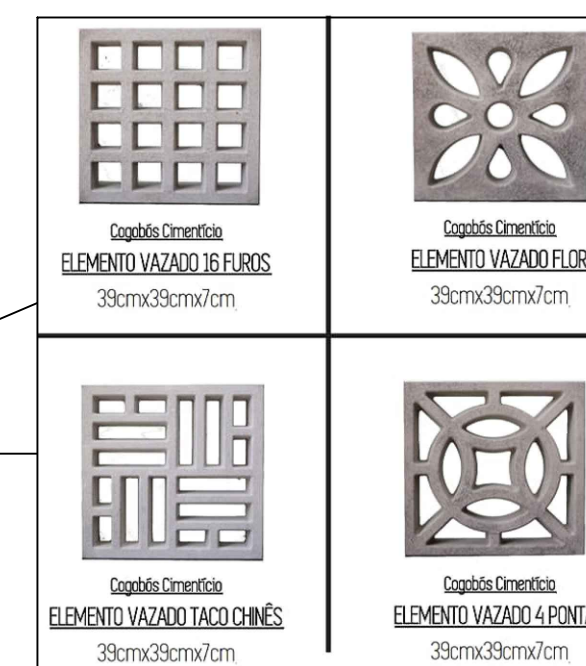
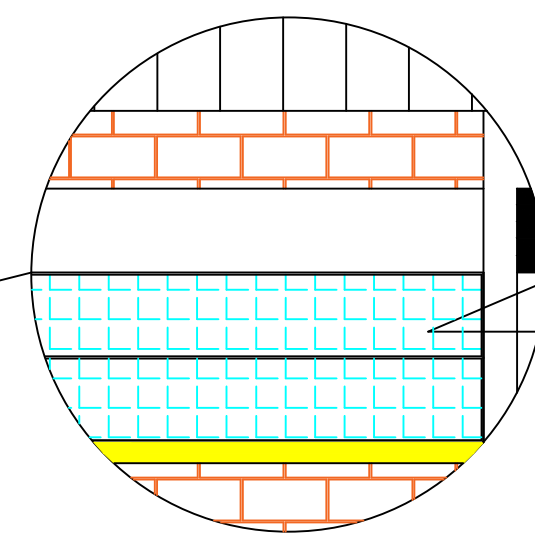
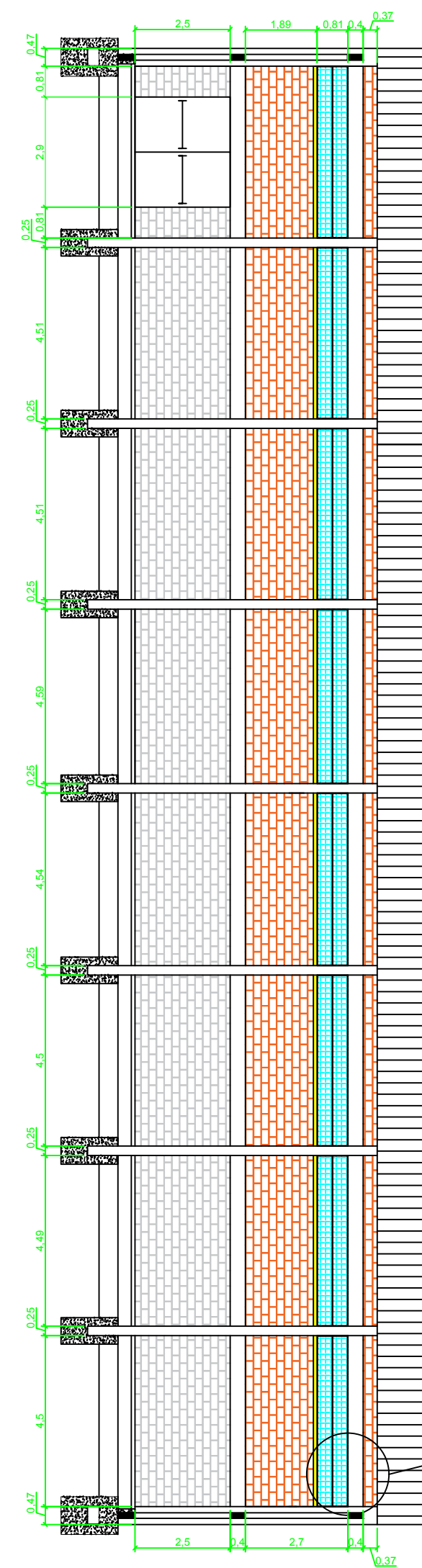
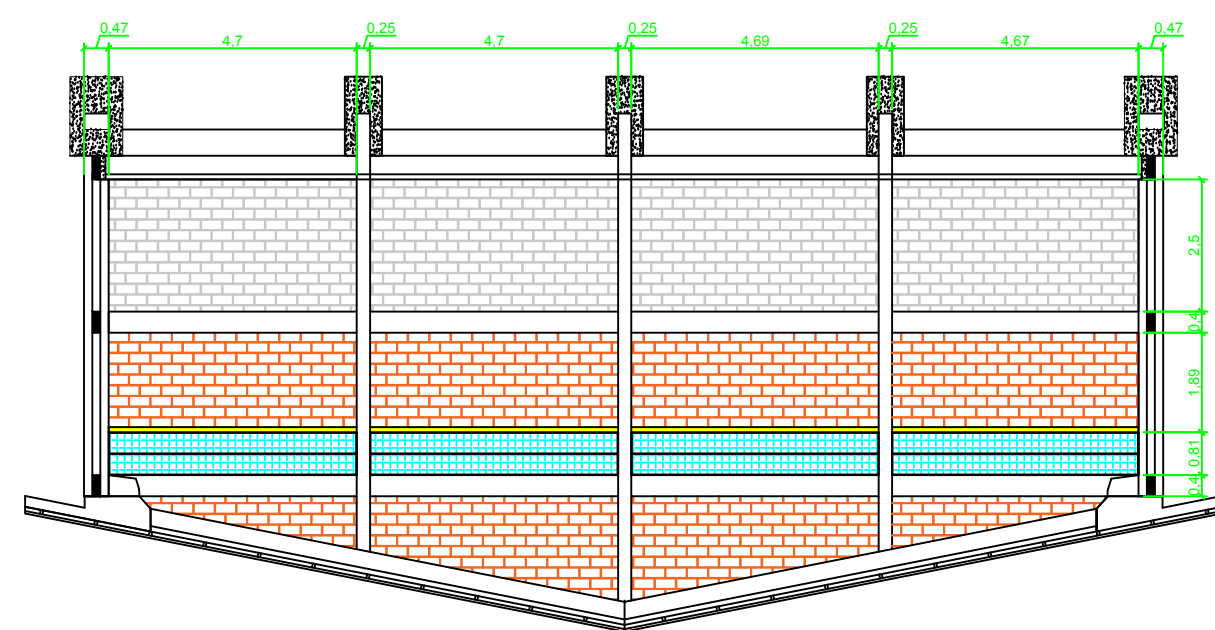
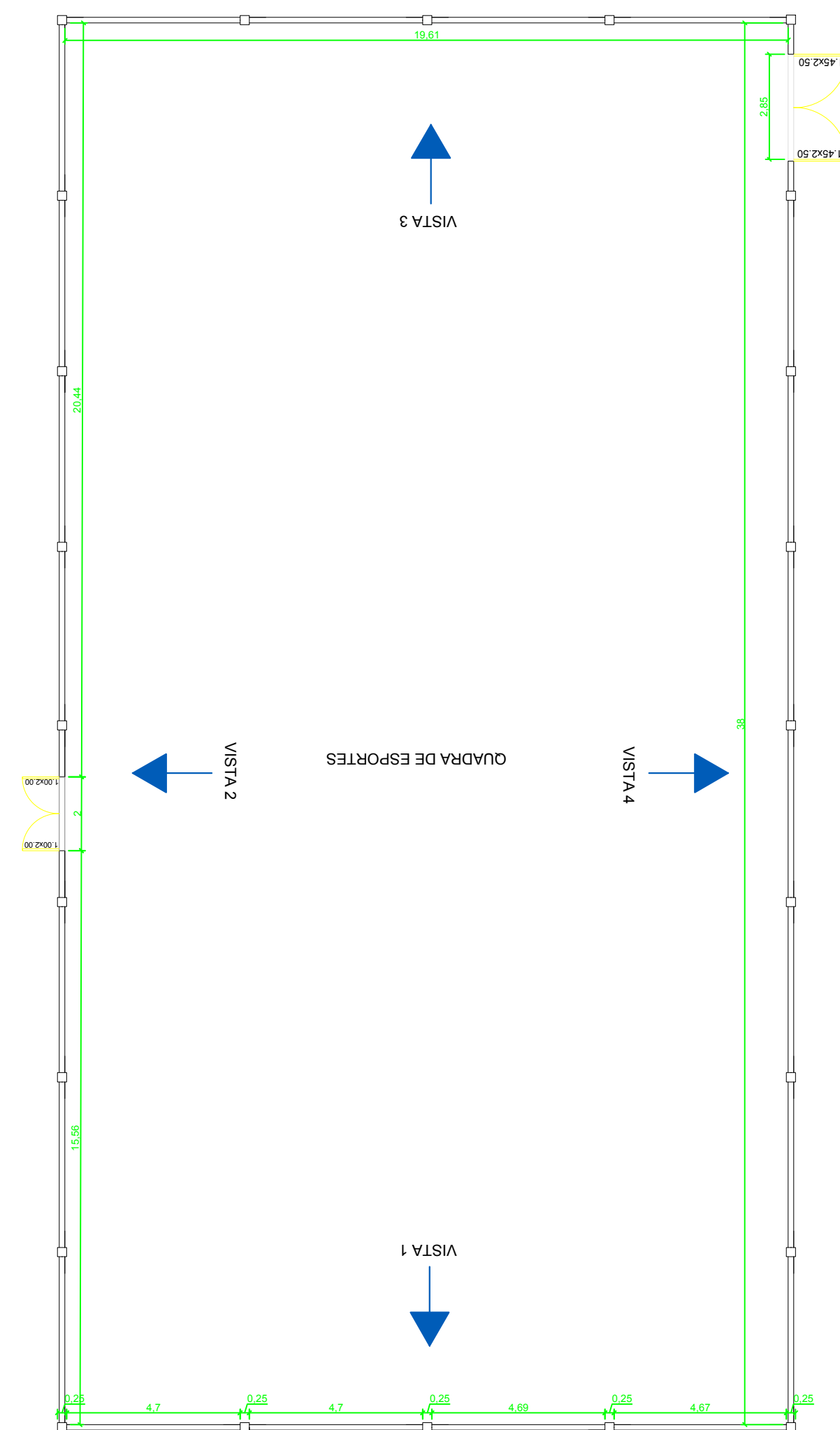
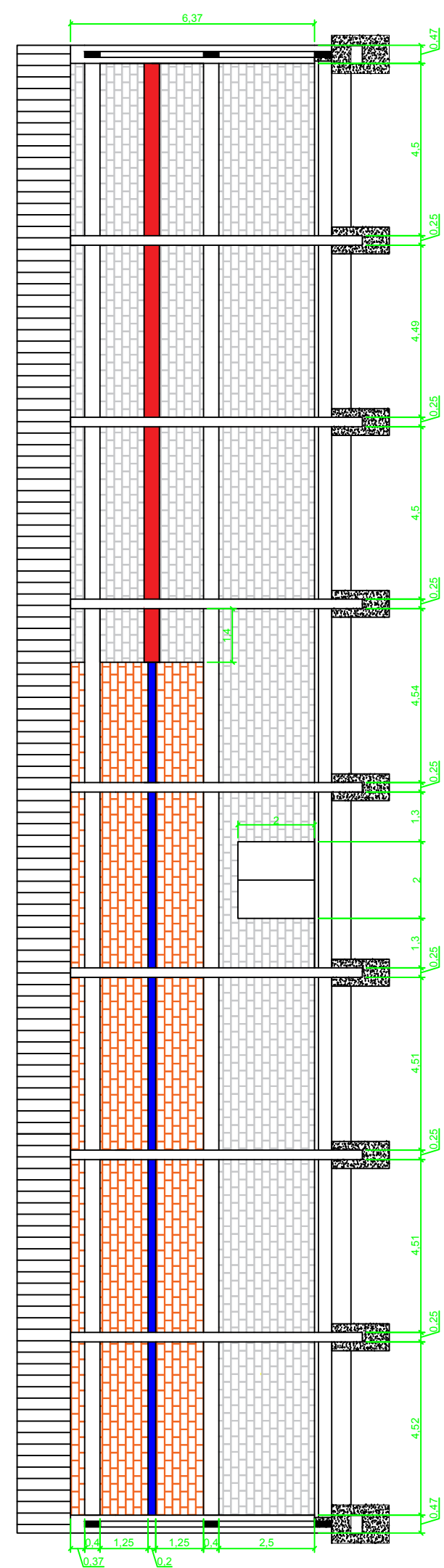


RUA ANGELO CERESER



LEGENDA:

- Alvenaria existente
- Alvenaria à executar
- Cobogó à executar
- Cinta de travamento existente
- Cinta de travamento à executar
- Cinta de travamento



DEPARTAMENTO MUNICIPAL DE ENGENHARIA

PROPRIETÁRIO: PREFEITURA MUNICIPAL TENENTE PORTELA

PROJETO: FECHAMENTO QUADRA POLIESPORTIVA

COLABORAÇÃO: Eduarda Schmidt

LOCAL: Escola Municipal Tenente Portela
Bairro São Francisco

DATA: SET/2019

RESPONSÁVEL TÉCNICO: Eliandro Tiecker

REGISTRO CREA: RS180283

ASSINATURA:

ESCALA:

PRANCHA:

S/E

01/01

Responsável Técnico

Proprietário